

# Isabelle

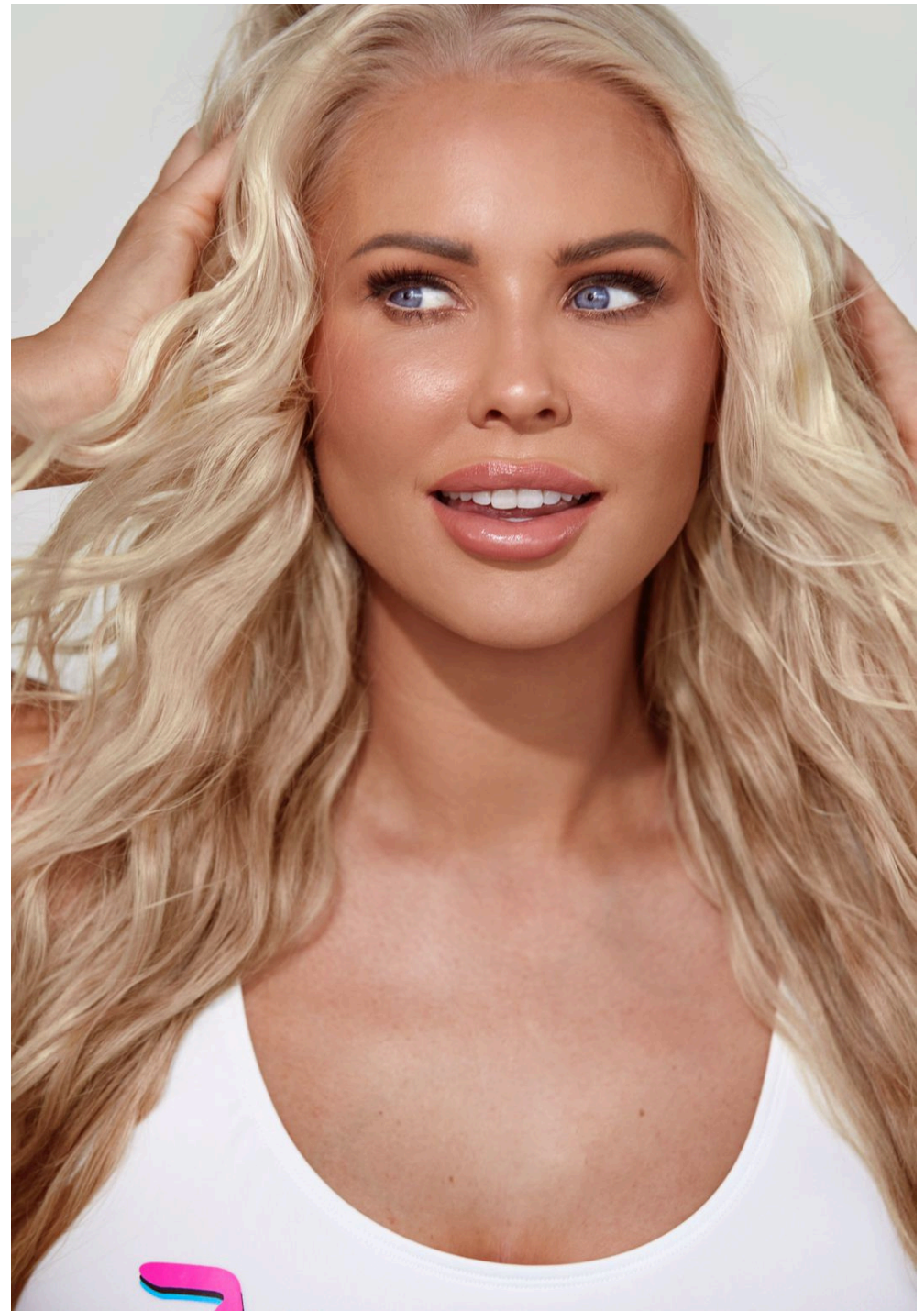
Height	175 cm
Chest	87 cm
Waist	68 cm
Hip	96cm
Dress	S/M
Shoe	40
Eyes	Blue
Hair	Blonde

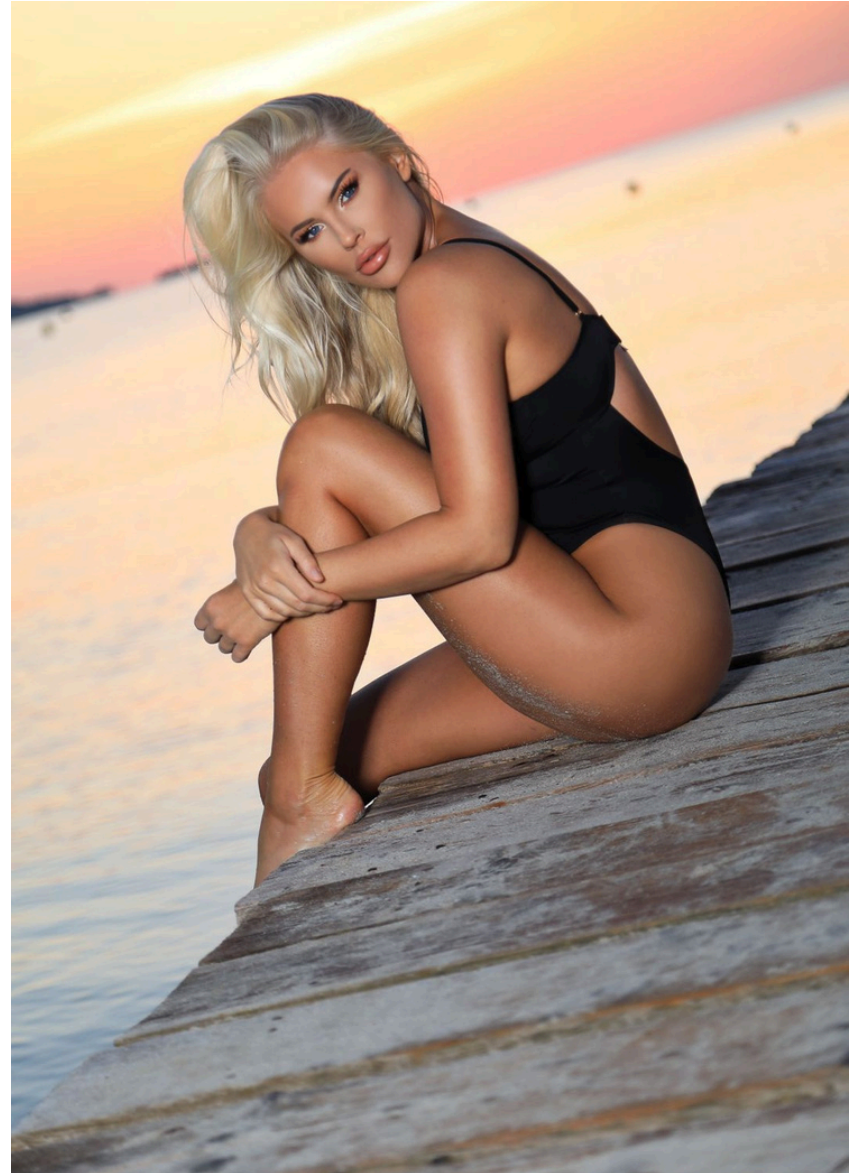
PRISTINE

MODELING AND EVENTS

[info@pristine-models.com](mailto:info@pristine-models.com)

[+971 58 558 7096](tel:+971585587096)

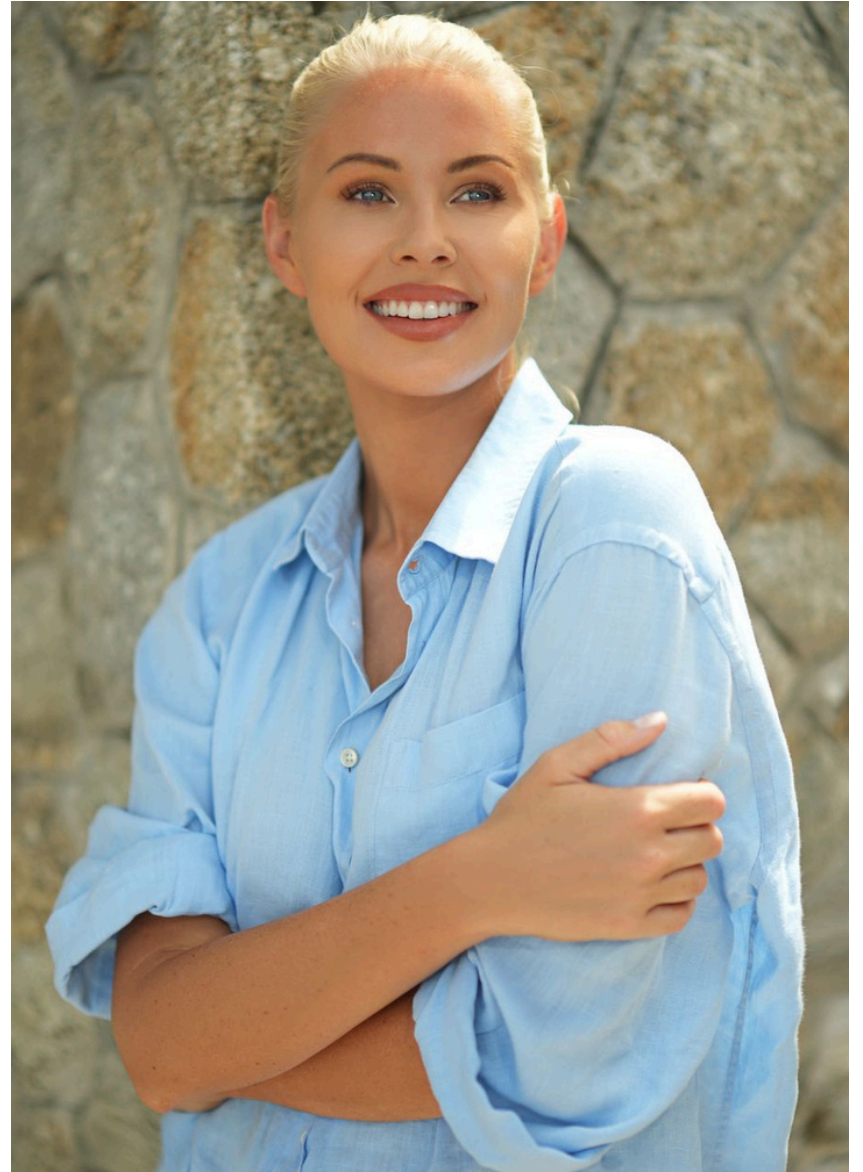




**PRISTINE**  
MODELING AND EVENTS

[info@pristine-models.com](mailto:info@pristine-models.com)

[+971 58 558 7096](tel:+971585587096)



**PRISTINE**  
MODELING AND EVENTS

[info@pristine-models.com](mailto:info@pristine-models.com)

[+971 58 558 7096](tel:+971585587096)



**PRISTINE**  
MODELING AND EVENTS

[info@pristine-models.com](mailto:info@pristine-models.com)

[+971 58 558 7096](tel:+971585587096)